



www.flitetest.com



FT Mini Scout

Recommended electronics:

2480 kv 250 size motor

10 amp ESC

300 - 800 mAH 2s Minimum

(2) 5 gram servos

————— black = cut

————— red = score 50%

————— blue = lightly crease or notes

Throws:

16° deflection (elevator/rudder)

Expo 25%

Weight Without Battery

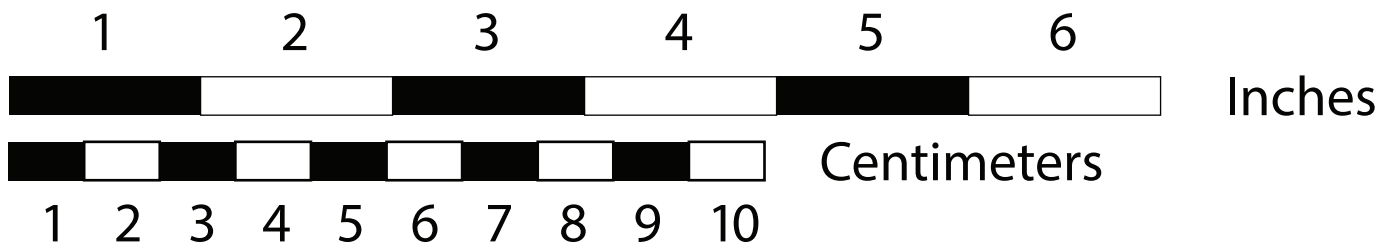
4.05 oz (115 g)

Tiled plans dimensions: 2 x 4

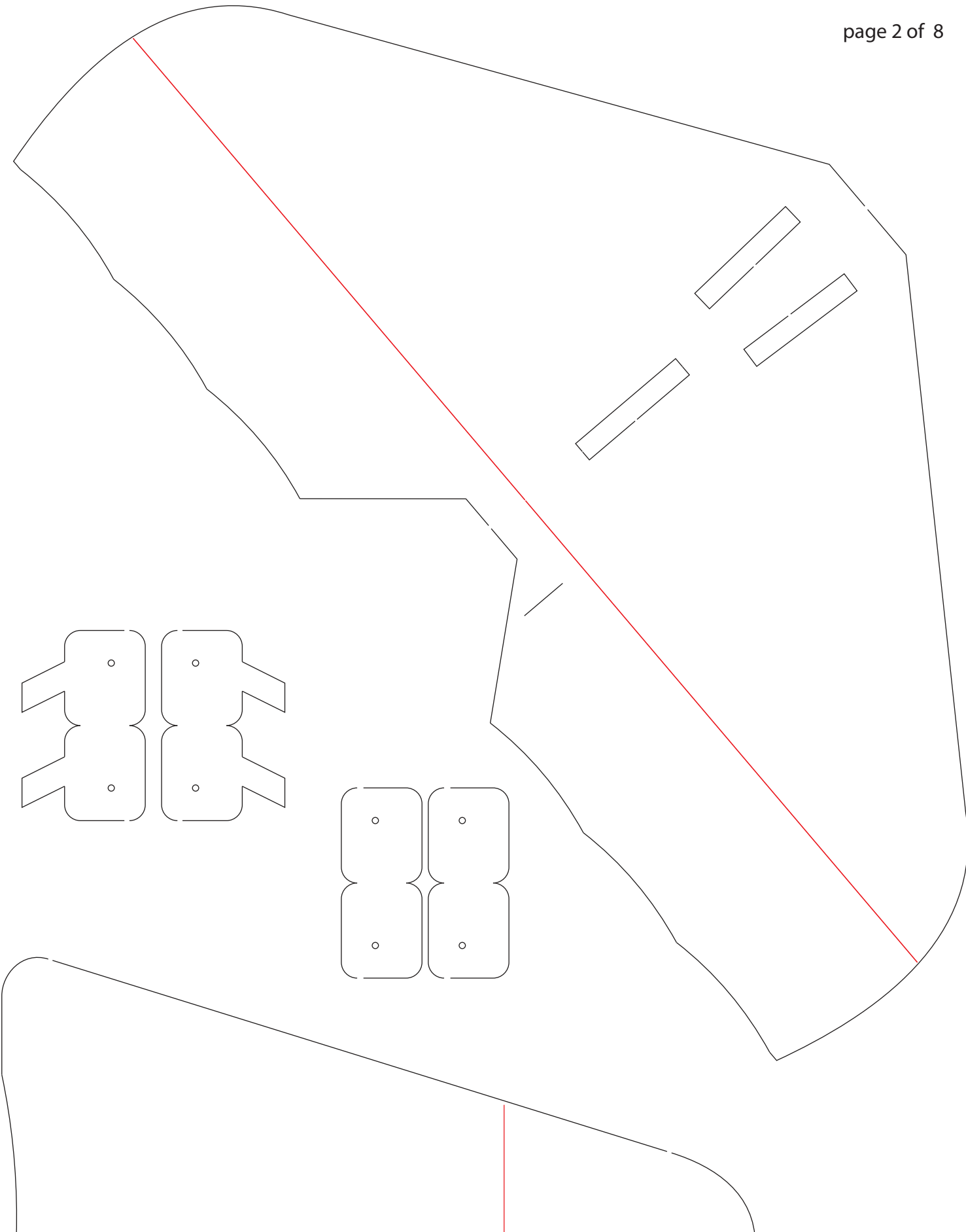
1	2	3	4
5	6	7	8

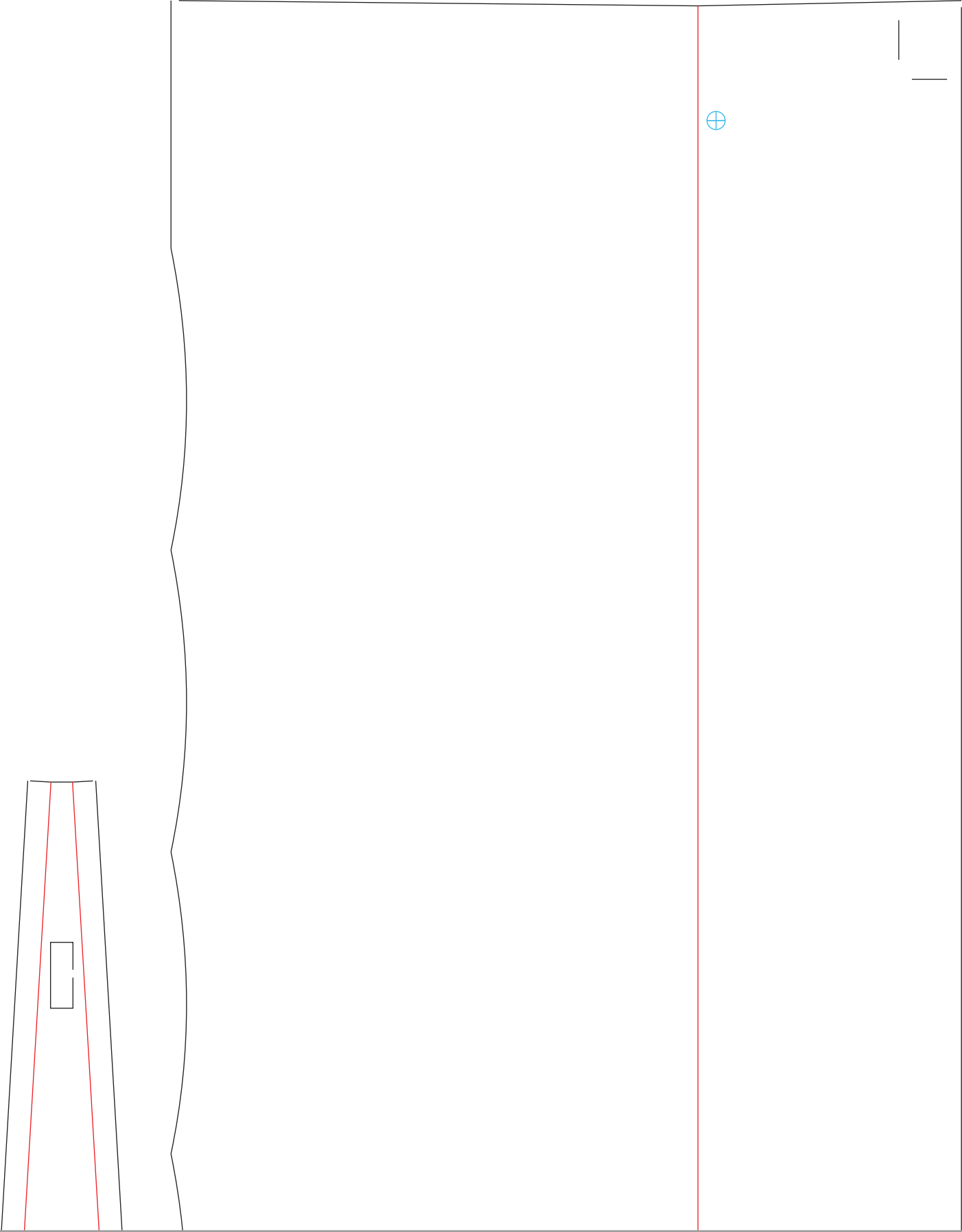
Prop:

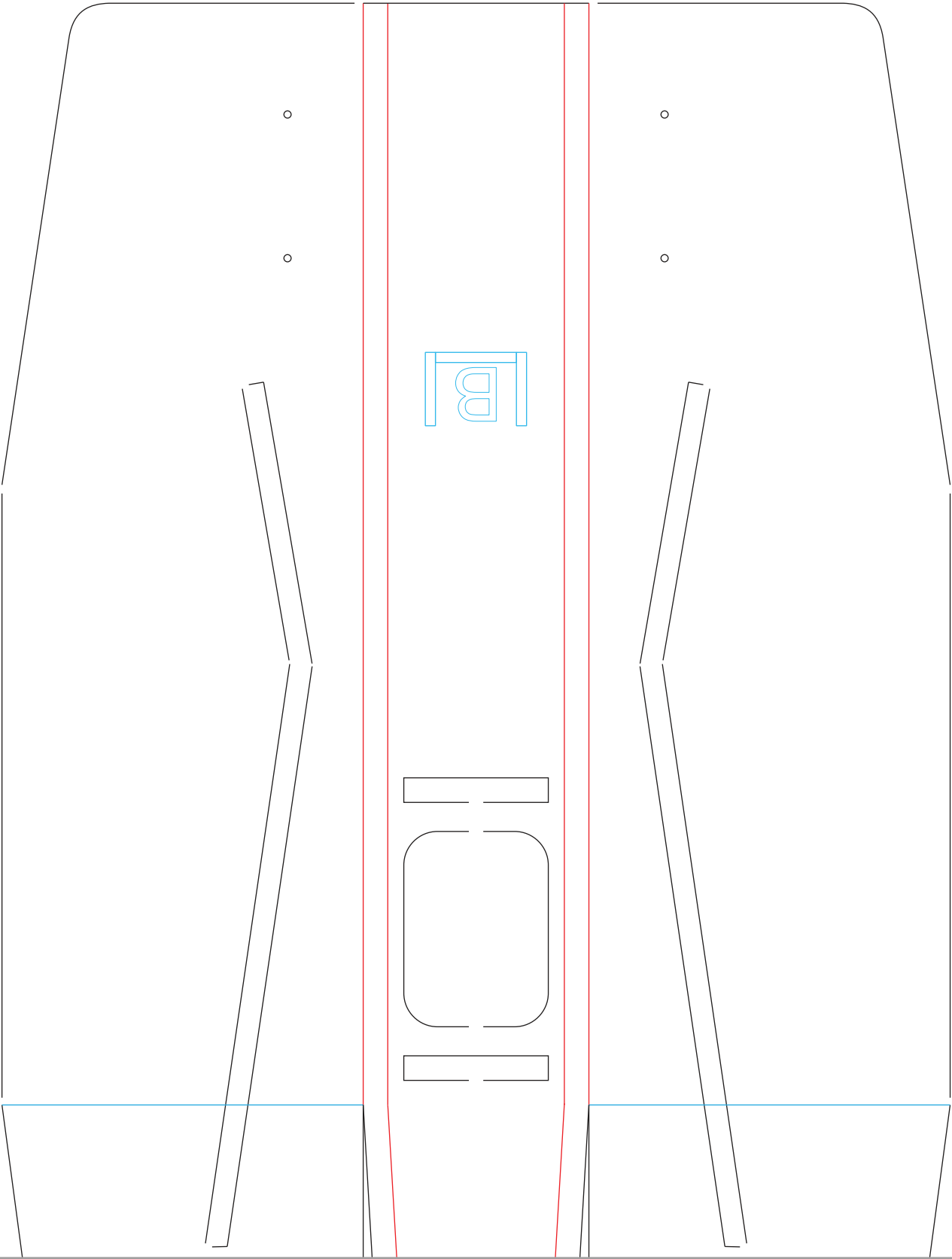
5 x 3 prop minimum



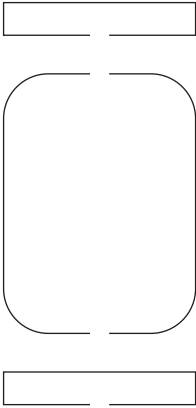
Design By: Josh Bixler



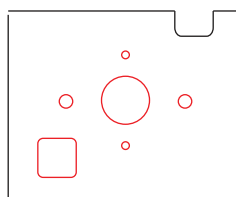
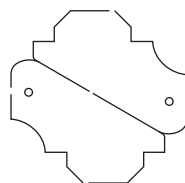




LB



posterboard



Firewall/Control horns
 $\frac{1}{16}$ " Inch thick
(1.5mm)
Hobby Plywood

